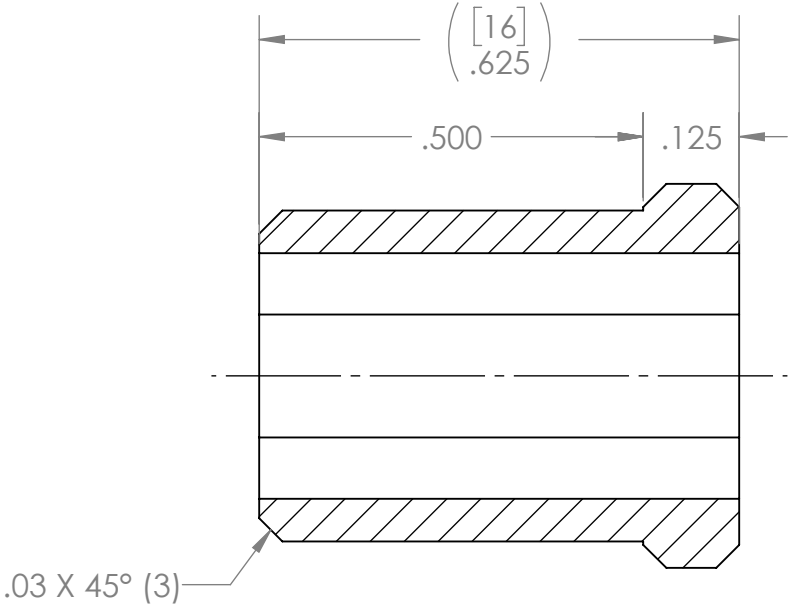
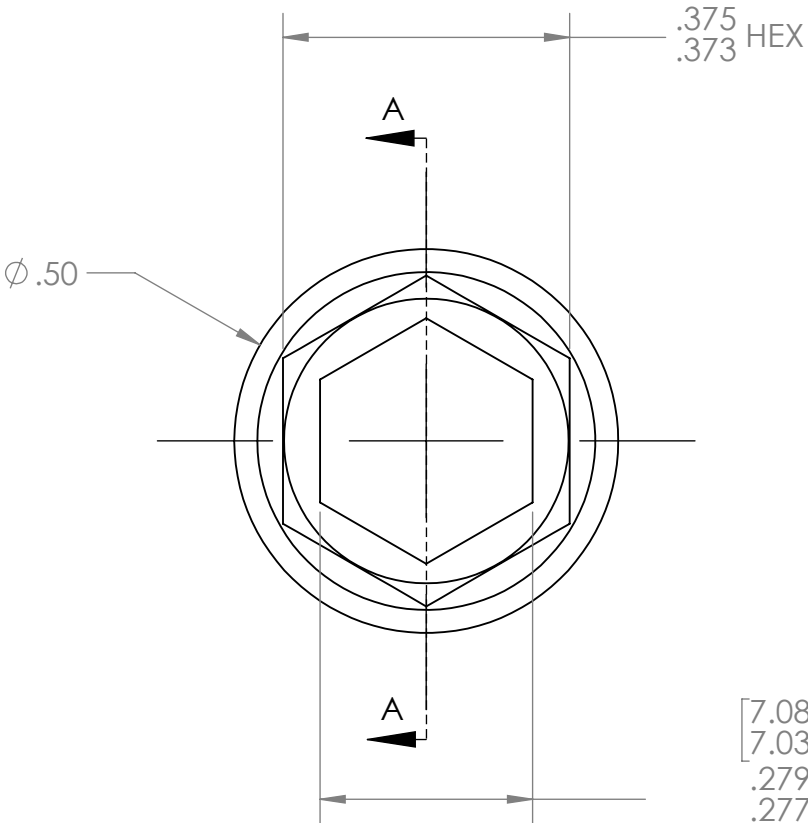


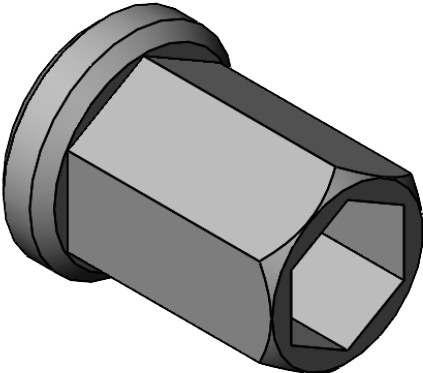
REVISION HISTORY			
REV.	DESCRIPTION	DATE	DRAWN BY
1	ORIGINAL PRINT	11/11/2024	P. YEUNG




SECTION A-A

[7.08]
[7.03]
.279
.277
HEX THRU ALL
TIMED AS SHOWN

*** SEE CAD FOR ADDITIONAL TOOLPATH INFO***



UNLESS OTHERWISE SPECIFIED:		COMMENTS:			
DIMENSIONS ARE IN INCHES		DUAL DIMENSIONS ARE IN MILLIMETERS.			
TOLERANCES:		BREAK ALL SHARP EDGES.		TITLE:	
FRACTIONAL	±1/16			7mm HEX TO 375IN HEX ADAPTER	
ANGULAR: MACH	±1°				
ANGULAR: BEND	±5°				
ONE PLACE DECIMAL	±0.1				
TWO PLACE DECIMAL	±0.01	MATERIAL STEEL		SIZE	DWG. NO.
THREE PLACE DECIMAL	±0.005			A	am-5584
FOUR PLACE DECIMAL	±0.0005				
FINISH	DEBURRED ZINC PLATED	CHECKED	NAME	DATE	REV
DO NOT SCALE DRAWING		ENG APPR.	NM	11/19/24	1
		MFG APPR.			
		Q.A.			
		SCALE: 4:1		SHEET 1 OF 1	